

Atlantianite® & Orgone

Atlantianite® is the name for a range of subtle energy Pyramids, Cones and Ziggurats. Each one hand made from a mix of organic & inorganic resin set at very high temperature. Crystals, 24 carat gold, pure silver, platinum, palladium, ferrous & non ferrous metals, wood, holographic glitter, energetic solutions and other items are added as needed.

Being near a piece of Atlantianite® will raise your vibration.

Hold the palm of your hand a few inches over the top of a pyramid or cone without touching it, or put it in the palm of your hand.

Close your eyes, switch off your phone, sit and hold your piece in your hand for 5—10 minutes each day. At first it may seem as if nothing is happening, then as your energy settles you will start to notice subtle changes.

You may feel tingling or warmth in your body, hands, feet, or around the top of your head as energy channels open. Your body can feel especially light or heavy. The sensations will change as Atlantianite® goes to work clearing and rebalancing you. There is no need to try to 'force' anything. Simply sit, breathe and notice what is happening. Afterwards you may notice you have more energy or feel more centred.



It is common to notice a reduction in pain.

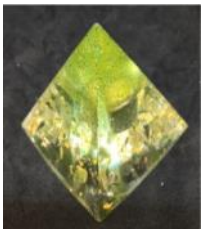
There may be associated images or colours.

Atlantianite® has uses in Healing on many levels, Psychic Development, Channelling, Past life issues, Chakra balancing, Aura work and much more.

Atlantianite® can be used to focus on particular issues such as health, relationships, finances and self esteem

Atlantianite® can be used to modify the effects of EMf pollution from computers and electronic devices by placing an Atlantianite® cone or orgone Generator next to your computer.

Disclaimer The properties of the crystals and stones and Atlantianite® * devices listed are based upon feedback from clients and customers, workshops and courses, published and unpublished sources and over 20 years personal experience of working with crystals and subtle energy healing. Atlantianite® device usage or crystal healing should not be considered as a substitute for conventional medical treatment. If you or the person using the crystal or device has a medical issue, you should consult a doctor or other appropriate health care provider. Due to the recent changes in UK law we feel obliged to state that because a crystal or Northstar Atlantianite® device is alleged to have one or more healing or energetic properties, either physical, mental, emotional or spiritual, it does not mean that you, personally, will experience, or benefit from, any such properties. Claims are often based on anecdotal evidence and have often not been subjected to independent scientific or medical scrutiny. Any information you receive, whether orally, in written form or electronically, relating to crystals or Northstar Atlantianite® devices purchased from Northstar Crystals or anyone connected with Northstar Crystals should be understood to be a personal opinion and is not a claim for the efficacy of crystals or Northstar Atlantianite® to heal or affect any physical, mental or emotional condition. © Northstar Crystals 2017



Return any item, within 30 days, in original condition, for a no quibble refund.

Page 1 /2

Having a piece of Atlantianite® around will raise your vibration

The effects can be rapid, especially with pain relief.

If you are dealing with causes then it varies greatly from person to person.

There will usually be an indication that Atlantianite® is working, often as sensations of heat or tingling in your body or a strong sense of wellbeing when you hold it.

Meditation. If you have chosen one of the meditation pieces such as 'Blue Planet' you may feel floaty and find yourself drifting. It is common (though not required) to experience visions. Hold in your hand, close your eyes for a few minutes, sit and just breathe. Start with 5 -10 minutes each day. Once you become used to the energy you can increase the time.

Other uses

Place on top of a painful area of your body.

An Atlantianite® device in a room is enough to affect all within.

Use on Chakra or Meridian points.

Place in the aura to affect a thoughtform.

For contact or distant healing.

Use in grids, alone or with other remedies.

Sit inside a grid of 4 cones for a few minutes each day to stabilise & protect your energy

Use with or without a focus

For EMf work place an orgone pyramid or cone near your computer or other electrical device

Do I need to clear old energy from Atlantianite®?

If you are using for certain types of healing especially pain relief you may need to clear the old energy occasionally. It can be more effective after cleaning.

We suggest cleaning using one of the methods below every couple of weeks. If you are working with very heavy energy or a deep healing process it will need cleaning more often. Place the Atlantianite® device on some earth for a couple of hours; in the garden if the weather is fine or on an indoor plant pot works equally well. Contact with the earth allows the old energy to drain out more easily. Mental healing methods, Reiki, Pranic healing etc. can also be used. A simple way to clean an Atlantianite® device is to point at the earth and rotate 4 times CLOCKWISE. This will clear the old energy. If you hold the device in your left hand you will notice 'clean' will make you feel light and expansive, while an energetically dirty one will make you feel heavy, or as if you are being 'squashed'.

Caring for your Atlantianite® device clean any dust away with a soft, dry cloth. Do not use chemicals, alcohol wipes or household cleaners, as these may cause the surface to become sticky or cloudy. NEVER put in a conventional or microwave oven or in the fridge. A little moisture will not hurt, but do not leave in water for hours on end as it may discolour. During very hot weather the surface of Atlantianite® can become slightly tacky to touch, this does not interfere with the energy and quickly disappears by itself but you can prevent it by rinsing briefly in undiluted washing up liquid then warm water. You can add a shine to the surface and cover minor chips by painting with clear nail varnish.

What if I drop it ? Atlantianite® pyramids are brittle and may get chipped. This will not affect the energy though you may want to use a nail file or fine sandpaper to smooth off the sharp edges.

Atlantianite® appears to be holographic, so even if it breaks into pieces, each piece retains the properties of the whole.

For more information about Atlantianite® products and workshops

www.northstarcystals.com

Callers by arrangement in Eastwood, Notts NG16 3RU Tel Erick 07990 874699

Page 2 / 2